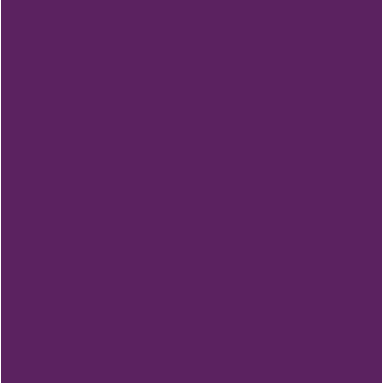




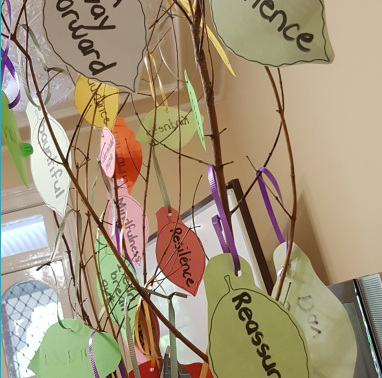
community



volunteer



Complementary Therapies
Community Generosity



services



ANNUAL REPORT

CANCER WELLNESS SUPPORT
2018-2019

From the Chair



On behalf of the Board of Directors of Cancer Wellness Support, we commend to you the Annual Report of our organisation together with the audited accounts for the financial year 2018-2019. Since our last Annual Report, our founder, Robyn Yates OAM, resigned from her position of CEO to concentrate on dealing with her own serious health issues. Robyn remains on the Board and continues to contribute her valuable experience to our future directions.

To accommodate the organisation's continued growth in the Blue Mountains and Penrith Valley, the Board concluded that two new senior staff positions would better serve our needs into the future and were involved in the selection of a General Manager and a Client Services Manager. Our new General Manager, Bronwen Johnston and Client Services Manager, Vivienne Maitland are highly qualified for these positions and have fitted seamlessly into our organisation.

Our charity depends on the success of our Op Shops through the efforts of our managers, staff and many loyal volunteers to provide income. This income enables us to continue our core service of providing subsidised therapies for our clients and their families.

Fundamental to our service are our therapists who attend to our clients with such care, compassion and professionalism. Our staff, therapists and volunteers are much appreciated by the Board of Directors for their commitment to our organisation.

We have this year moved to update our office practices as well as promote ourselves to a wider community through greater use of digital platforms.

Our organisation has succeeded in achieving the goals set out in our Strategic Plan. Over the next 12 months, and into the future, we are committed to continuing and improving our services to our clients living with cancer and their families in the Blue Mountains and Penrith Valley areas.

Bob Reid, OAM



From the General Manager



It is a great pleasure to be a part of this wonderful organisation and walk in the footprint of our visionary founder Robyn Yates.

In 2005, I was a part of the official opening of what was then “Blue Mountains Cancer Help”. Since that time, I have watched in awe at the organisational progress, resulting in life changing outcomes for people in our community who have been affected by cancer.

With a background in healthcare, local government, small business and corporate, I am committed to ensuring that Cancer Wellness Support remains strong. The generosity of our supporters enables our organisation to continue to flourish. Volunteers who so willingly donate hours of work to support our thriving Op Shops, are part of the rich fabric of our organisation, with 90% of our funding being derived from op-shop sales, contributing to a growth in total income of 9% and an increase in retained profit of 21%.

As a team, our Client Services Manager Viv Maitland and I will continue to strive to deliver a robust organisation and provide excellent services to our valued clients.

Bronwen Johnston

From the Client Services Manager



I wish to say a sincere thank you to the professional and fully committed therapists who work with our clients providing affordable therapies. It is with the commitment of our therapists in providing their valuable services at a subsidised rate that we are able to continue to deliver a wide range of complementary therapies to our clients living with cancer, their carers and families.

As we continue to build awareness of our services we have appreciated the opportunity to strengthen our relationship with Western Sydney University, through hosting first year students on one day placement in addition to providing a five week placement to a third year medical student. The University's Medicine in Context unit provides a unique approach to opening opportunities for medical students to move out into the community and observe various forms of health delivery. Our intention is to maintain and build on this relationship well into the future.

Viv Maitland

From the Founder



It is now a year since I sadly left the team at Cancer Wellness Support due to my own health challenges. Whilst remaining a Board Member, I have been able to observe the developments over this period of adjustment. Having always been aware that when there are changes in management structure, things will never be exactly the same as before and people can feel unsettled during the transition.

I am very pleased to say that the philosophy and values have been continued in the way that was always intended and the service provision in terms of client needs and support are paramount in our day to day operations.

The hard work of the management team, staff and volunteers allows us to continue to provide a high number of therapies both individual and in groups. Our wonderful therapists who provide these important services, 5,724 this financial year, continue to demonstrate their commitment to our clients, supported by administration staff in both centres.

I also commend the work of Bronwen Johnston and Vivienne Maitland on their enthusiasm in implementing and sustaining the values set in place 14 years ago when Blue Mountains Cancer Help was born. Our profile has grown in the last 12 months due to excellent marketing strategies and securing of even more regular business sponsorship for this important community service, which remains unique in NSW.

As I navigate the many challenges of Motor Neurone Disease, my mind is at rest with regard to the future of Cancer Wellness Support. I am grateful to the team and believe the organisation is in good hands. I am confident we will be around to provide support to those who need it, for many years to come.

Finally my heartfelt thanks to the Board, including Kerry Fryer, who has also volunteered her time over many years to assist in all areas of staffing and finances. Her support with the transition at the time of my retirement was invaluable.

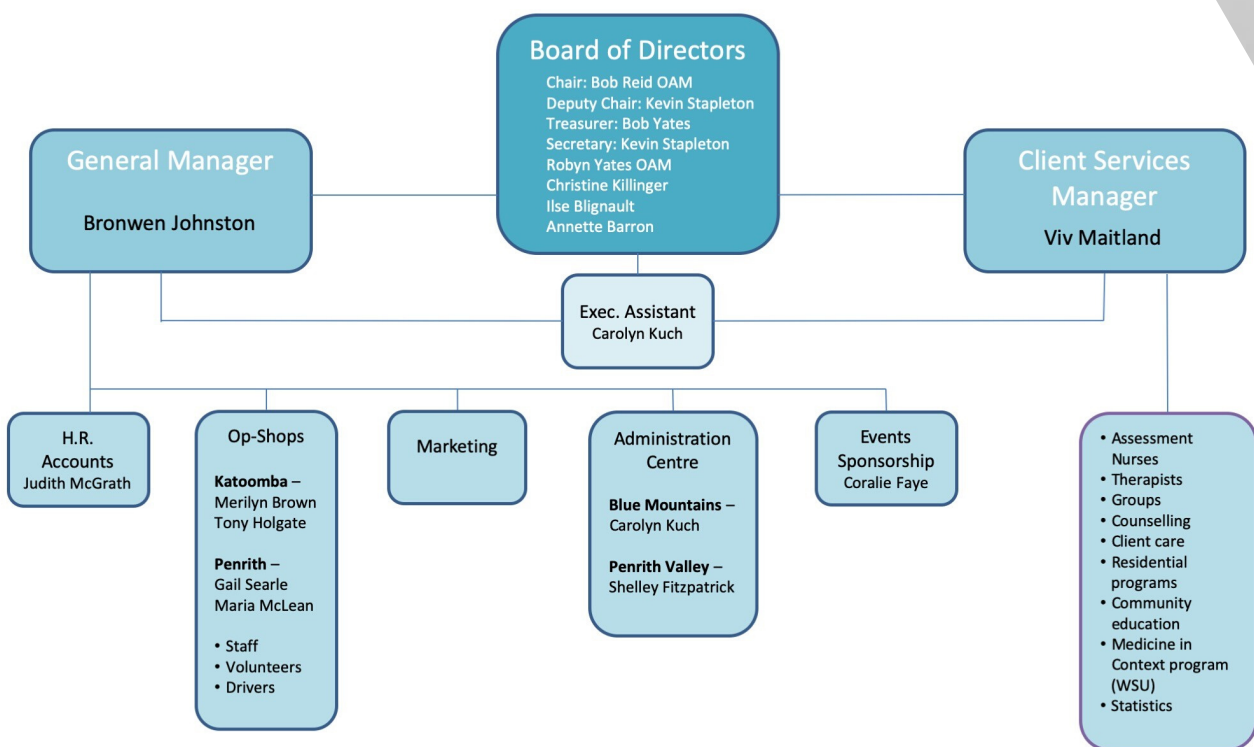
Robyn Yates, OAM



"With the community working together we can truly achieve anything"



Organisational Structure



Thank you for your service:

Annette Barron stepped down from the Board in October 2018.



Board Members

From left: Ilse Blignault, Bob Yates, Bob Reid OAM Chairman, Robyn Yates OAM CEO, Kevin Stapleton, Annette Barron, Christine Killinger.

STRATEGIC PLANNING 2018 - 2019

Vision

That people in the Blue Mountains and Penrith Valley regions experiencing cancer will have the opportunity to access affordable therapies and services to assist them and their families to cope more effectively with their diagnosis and to feel supported by their local community

Mission

Cancer Wellness Support is a non-profit, non-denominational charitable organisation committed to helping cancer clients and their families retain their sense of control and balance through innovative, integrated and holistic therapies and education, whilst at all times giving hope for those facing challenging circumstances. We treat everyone with compassion, care, confidentiality and respect

GOAL 1

Provide, strengthen and expand subsidised therapies, education and services to clients and their families living with cancer in the Blue Mountains and Penrith Valley regions

GOAL 2

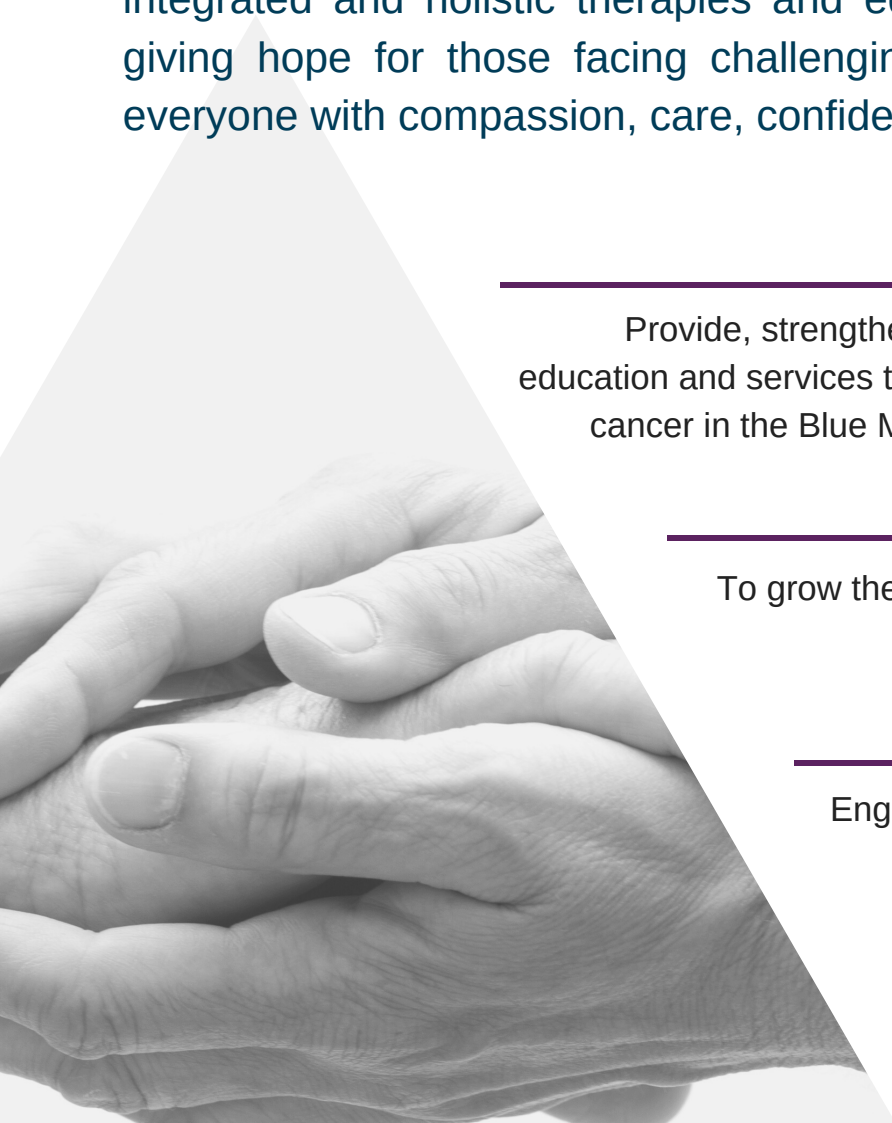
To grow the organisation and achieve adequate funding to undertake Goal 1

GOAL 3

Engagement of local community support and participation on all levels

GOAL 4

Best practice Corporate Governance



GOAL 1

Provide, strengthen and expand subsidised therapies, education and services to clients and their families living with cancer in the Blue Mountains and Penrith Valley regions

Therapies

From the initial contact with Cancer Wellness Support, to the intake assessment, to designing the right mix of therapies, to finally beginning therapies, we encourage clients to feel empowered in their choices with the open invitation to revisit these choices to ensure the therapies are continuing to meet their changing needs as they travel through their cancer journey.

Investing in your personal "Well Being Path" is an essential component of being well. Complementary therapies 'complete' the overall health approaches. Choosing therapies are both from personal choice as well as with guidance from the intake nurse, counsellor or other therapists who identify a need in a client and may refer to a therapy they believe will enhance their well being.

Each client's journey through the various types and phases of cancer will manifest a variety of outcomes from either their medical treatment or their medical condition.

5,724

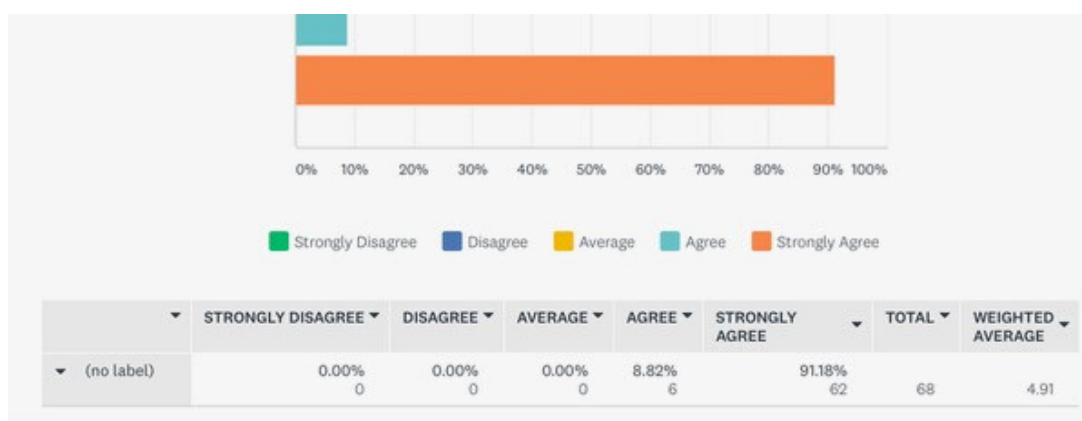
Total number of therapies delivered in 2018-2019

610 members

414 clients
62 carers
42 therapists
92 volunteers

Client Survey Results from 70 client responses

91.18% believe that the subsidised cost of individual therapies enables them to fully benefit from regular treatments



Lymphoedema Management

Lymphoedema is a swelling of part of the body, usually a limb and can occur as a side effect of cancer treatment when lymph nodes have been removed or damaged causing lymph fluid to build up in tissue under the skin. Our massage therapists provide specialised on-going support to clients who present with this condition. As the treatment and management program is over a long period of care, maintaining a commitment to this treatment can become costly and it is only with the subsidised therapies we offer that many can afford this over the long term.

Massage (Oncology)

Since 2009 great strides have been made in the world of oncology massage, a gentle touch therapy that helps to alleviate many of the symptoms experienced with cancer, such as pain and fatigue in addition to those experienced from the medical treatments of chemotherapy and radiation.

Without pressure and massaging away from the lesion, muscles are able to relax, blood flow improves and most of all the client is able to be still, resting both body and mind, for an hour. If undergoing chemotherapy, massage assists the body to more easily detox and kick start the healing process.

Movement Groups

This year we have focused on building group participation in body movement therapies. Research is strongly highlighting the importance of maintaining muscle mass and core strength especially for those undergoing and completing chemotherapy.

Qi Gong

Qi Gong offers the combination of breath and movement in this mind body approach. Breath work opens up new neural pathways in the brain to help change the old pathways, patterns we have habitually relied on to help us make sense of our world.

In Qi Gong your body works with the specialised movements in a gentle flow through your standing or sitting body without pressure, exertion or exhaustion.

Reflexology, Acupuncture, Yoga

Reflexology, acupuncture and yoga open up the energy meridians or energy channels in the body to unblock and rebalance the flow through the whole body. These therapies are particularly supportive to those who live with the side effects of chemotherapy and radiation. Not only do they stand alone as a whole treatment of care they also fulfil a vital role in healing for clients who do not wish to use body massage as part of their well being path.

" I consider the choice to add Cancer Wellness Support to my recovery phase opened me up to more than complementary therapies, it opened me up to a new community of friends "

- Robin Leith

Counselling

Many of the individual touch and group therapies are a time for inward silent reflection but in counselling, it is the time to talk - in a safe, confidential space and be heard by a person who is invested in you and not connected to anyone else in your network.

Your emotional well being is at the core of your cancer journey. Relationships can change and counselling is simply time out to be heard for the person with cancer, their family members and carers. Counselling helps all involved make sense of the changing landscape of living.

Art Therapy

Art therapy is not about being an artist, it is your free expression through the medium of art - from inward silent reflection to open shared expression. The materials used are varied and pieces can be shared projects or individual ideas but always accompanied with the space to talk, to listen and just be yourself and your art work.

Quest For Life Centre

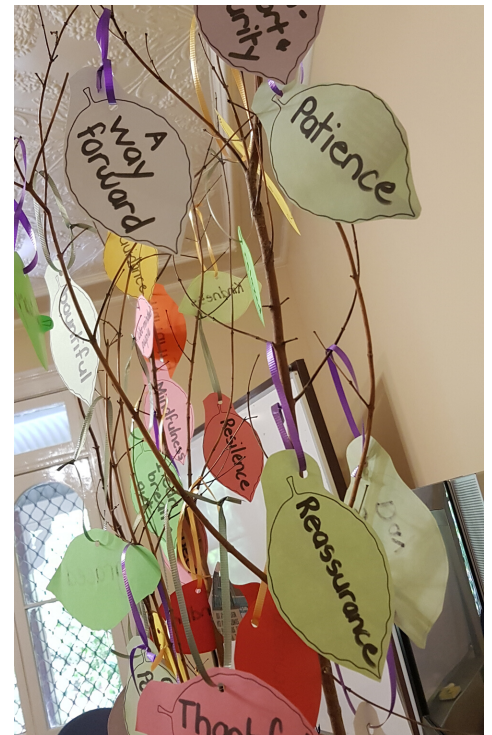
During the year our clients have been supported to attend in house programs creating opportunities to visit the ways in which they may have placed meaning in their lives. The range of programs includes residential retreats and community-based workshops that encourage, educate and empower people to face the challenges of a cancer diagnosis with increased confidence.

Living & Thriving Retreat

A three day retreat for clients, carers and partners provides an educational opportunity, which brings together the best of the holistic methods and approaches available. Led by psychotherapist, Sabina Rabold, the approaches are additional and complementary to any other treatment choice and include meditation practice, nutrition, care to self and others, balancing the demands of daily life, pain management and developing a personal cancer program.

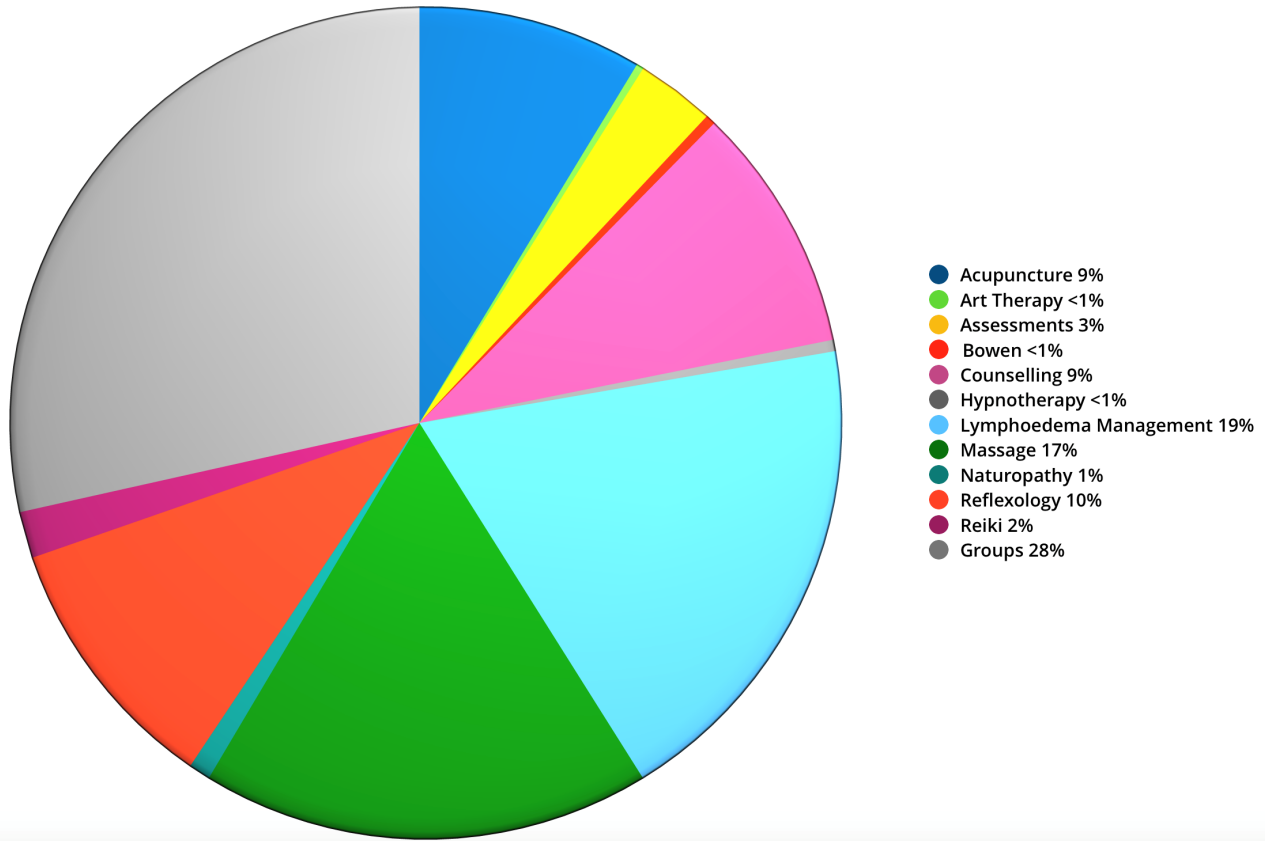
Mindfulness Meditation

Mindfulness meditation is an integral part of well being. The combination of mental peace with deep breathing has an immediate physical response, it kicks in the parasympathetic nervous system lowering blood pressure and pulse which in turn settles for example, anxiety and most of all you learn you can never stop your thoughts but you can live with them more peacefully.

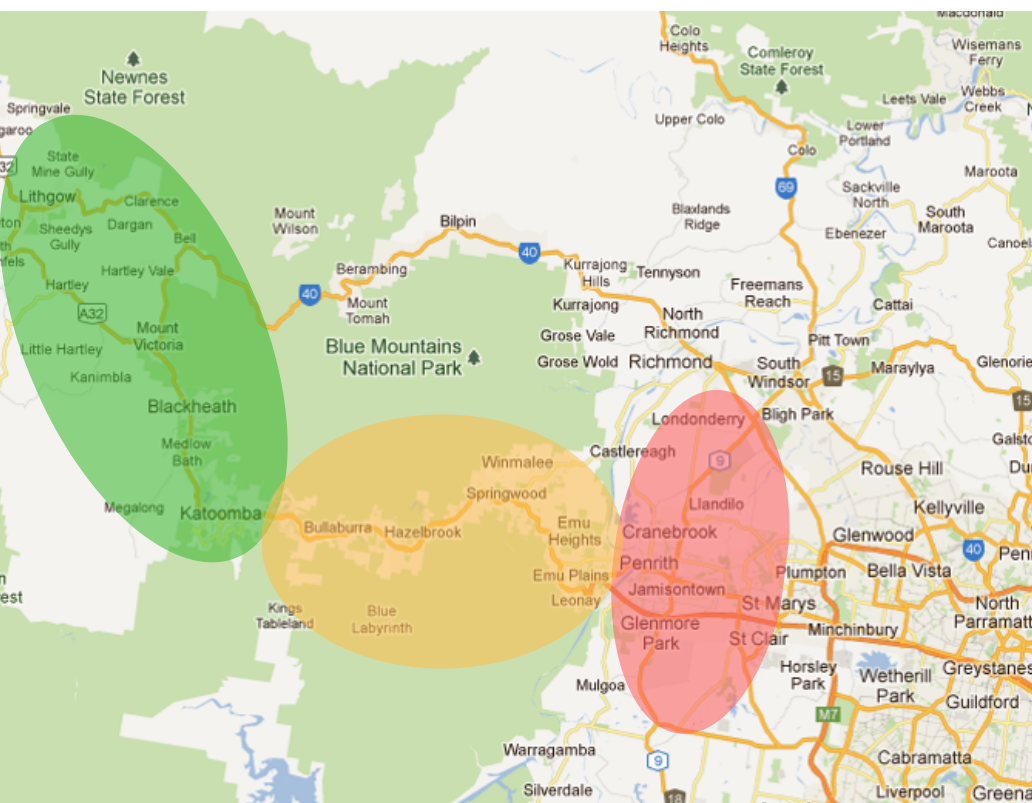


Cancer Wellness Support continues to support our clients through the provision of appropriate books in the library at both centres. Loans are available for a gold coin donation.

Subsidised Therapies Delivered 2018 - 2019 (Total Number 5,724)



While our centres are based in the Blue Mountains and Penrith, we presently welcome over 40 people from other areas who wish to engage with the various therapies and services we provide.



Service Area Percentages

- Upper Mountains 42%
- Lower Mountains 20%
- Penrith Valley 30%
- Other 8%

GOAL 2

To grow the organisation and achieve adequate funding to undertake Goal 1

Cancer Wellness Support is 90% funded by our two thriving Op Shops located in Katoomba and Penrith. Through generous saleable donations, the shops continue to be supported and loved by our followers, with many customers being on a first name basis with our staff and volunteers. The dedication and expertise of our managers, staff and volunteers, under-pins shop growth. Katoomba Op Shop is managed by Marilyn Brown with assistance from Tony Holgate and Penrith Op Shop by Gail Searle assisted by Maria McLean. Added support is provided by other casual staff. The managers have a key role in retail management, combined with staff supervision, training and implementation of WHS practices.

Katoomba Op Shop



Marilyn Brown, Manager

"As the Manager of the Katoomba shop, I thrive on being part of this unique model that provides such tangible and direct benefits for those affected by cancer in our community. At the Katoomba shop we take great pride in developing relationships with our customers. Our regulars often call in daily and it is a pleasure to see them. The shop has an upbeat vibe as customers fossick through racks of clothes and bric a brac seeking a bargain. I am proud to be a part of a community of kind people who open their hearts and wallets to help each other"

Penrith Op Shop

"As the Manager of the Penrith shop, I enjoy the positive community vibe, people donating goods, volunteers working hard to sort the goods and staff selling stock to directly benefit those who have been touched by cancer. The relationships that develop through the shop are wonderful. We thrive on providing our valued customers with outstanding service and encourage them to return time and time again."



Gail Searle, Manager

Katoomba Men's Shed repairs donated furniture items that require minor attention. Income from these sales is then shared by the two organisations. Thank you Men's Shed!

Our Centres

Service delivery at our two centres in Penrith and the Blue Mountains has progressively consolidated with a regular schedule of therapists, groups and activities now available at both centres.

Private therapy rooms for subsidised therapies such as, massage, counselling, and reflexology provides opportunities for client members to access vital therapeutic services. Clients can also access our services in the therapists' own professional rooms.

In addition to our libraries of books, CDs and DVDs relating to wellness and living with cancer, both centres offer a range of wigs which are available on loan.

Groups including Yoga, Qi Gong and Gentle Movement are offered weekly and other workshops including Mindfulness Meditation and Art Therapy are regularly programmed throughout the year.



Corporate Sponsorship

Corporate Sponsorship offers an opportunity to not only raise funds but to build strong long-term business relationships that are mutually beneficial to both parties. Our sponsorship strategic objectives are to partner with Blue Mountains and Penrith Valley businesses for an ongoing period of three years. Sponsorship levels are Platinum at \$5000 per year, Gold at \$2500 and Silver at \$1000 per year.

Sponsorship benefits depend on the level selected and may include brand placement and a link on our website, social media opportunities, invitations to events, inclusions in newsletters, business name and logo on signage at Penrith and Katoomba Op Shops. Corporate sponsorship involvement also demonstrates to staff, customers and stakeholders, the sponsor's commitment to their local community.

Cancer Wellness Support is a member of Penrith Valley Business Chamber and the Blue Mountains Regional Chamber of Commerce. Our Sponsorship Coordinator regularly attends networking business functions with the aim to increase our profile as a major local Not For Profit organisation, working to support our local community with the goal to build business relationships and sponsorship opportunities.

Platinum Sponsors



Gold Sponsor



Silver Sponsors



Fundraising BBQ with Platinum Sponsor Richard Crookes Constructions

During September, Richard Crookes Constructions held a charity BBQ with all funds raised donated to Cancer Wellness Support. Held in the grounds of the Royce Project, a new state of the art aged care facility, the day was supported by Richard Crookes Constructions employees and sub-contractors raising \$9,780.00.

Dry July

We were successful in achieving a grant from the Dry July Foundation for \$10,000 enabling us to facilitate and provide accommodation for our clients to attend the Living and Thriving program designed to focus on wellbeing.

GOAL 3

Engagement of local community support and participation on all levels

What Our Volunteers Do

- Represent us in the community
- Sort, shelve and rotate Op Shop stock
- Pricing and sales in the Op Shops
- Furniture pick up and delivery
- Maintain cleanliness and presentation of premises
- Office reception duties, clerical tasks, mail-out, filing
- Organise catering for groups
- Database and other IT systems input and management
- Manage book/CD/DVD/wig libraries
- Client transport as required
- Undertake responsibility for particular projects, such as event planning and delivery, library management, data entry and archives management
- Assistance in fundraising, community service and cancer awareness events involving volunteers and supporters on committees and working groups
- Board members contribute time supporting various management functions and responsibilities that are essential for the professional and effective operation of Cancer Wellness Support

Other Networks

- Men's Shed Katoomba
- Palliative Support Service, Lawson
- Community Health
- Nepean/Blue Mountains Prostate
- Cancer Support Group
- YWCA Encore (post breast cancer)
- Katoomba Women's Health Centre
- Western Sydney University

"I work at the Cancer Wellness op shop five days a week. I really enjoy it here, the people are friendly, the atmosphere is positive and I have made some good friends. Working here has helped me immensely to reach out to people, giving me a sense of purpose. It makes me feel useful and I like liaising with customers."

Carol Basiuk
(Volunteer Penrith shop)

Medical Student Placement

An important link for Cancer Wellness Support with the Western Sydney University provides a five week placement opportunity for third year medical students at our centres. The student gains experience of all facets of Cancer Wellness Support philosophy and operations, its links with community health services in the Blue Mountains and Penrith Valley and its relevance to a holistic approach to caring for persons dealing with cancer issues and their families.



Community involvement is an essential component of Cancer Wellness Support involving therapists, Op Shop donors and shoppers, fund raisers, Board members, supporters and a large band of volunteers.

- Services provided by Cancer Wellness Support are delivered by qualified and personally insured specialist therapists. Our impressive group of therapists agree to provide their services at a subsidised cost. Service recipients make a part-payment of \$25 to the therapist and the balance is paid from the funds raised by the Op Shops. We thank all our therapists for their dedication and care of clients.
- Various groups undertake localised fundraising enterprises and contribute to us through community market sales, music groups, coffee clubs, personal donations and social events. These ventures draw on community assistance in a variety of ways and the Blue Mountains and Penrith Valley communities give generously. The hours, energy and expertise devoted to planning and completion of these projects could never be estimated and are greatly appreciated.
- Community involvement is significantly demonstrated by the generosity of donors to the Op Shops, the enthusiasm of our shoppers who appreciate the opportunities to buy recycled goods at reasonable prices. Shoppers also value the good management and cheerful atmosphere at the shops, as well as the user-friendly layout and accessibility of goods.

A beautiful crochet or knitted knee rug or handmade quilt is given to each new client. For many, these rugs symbolize comfort and care as the client attends their various therapies. Rugs are made and donated by members of Springwood Red Cross, the Caring Heart Quilters and other donors.



We thank everyone for their generous participation and support. It is the community's contributions that enable us to provide services for people experiencing cancer and their families.

39,640

Volunteer hours contribute annually to the work of Cancer Wellness Support, at the shops, in administration, raising community awareness, or in fundraising activities and Board of Management commitments.

SUNSHINE DAY

Held in the winter month of June 2018 the new home of Cancer Wellness Support opened its doors to the community with its showcase day, Sunshine Day.

Through the day, therapists introduced participants to their therapy and some clients spoke to the benefits they gained from their choice of therapy.

Community network organisations joined with us on the day to showcase their work in the cancer arena.

ArtyBra & Tie 2018



This major biennial event raises awareness of Cancer Wellness Support services. ArtyBra & Tie has proved a popular highlight in previous years, drawing on many varied creative and artistic skills in the community and 2018 was no exception. Exhibitions of entries were held at The Joan in Penrith for two weeks in August, followed by a further ten days at Ben Roberts Gallery in Lawson. The final auction of all entries was held at The Carrington Hotel, Katoomba in September.

Blue Mountains Food & Wine Coach Tour

On Friday 28th June, our Fundraising coach trip celebrated the best of what the Blue Mountains has to offer. The tour started with an expert talk and insight into the Bush Foods of the region before heading off to a local hand-made gourmet food producer to see chocolate rocky road in the making.



The tour included spectacular mountain views along with lunch and wine tasting in Megalong Valley at Dryridge Estate boutique vineyard. Fantastic Aussie Tours generously sponsored the historic Ansett clipper for the day.

Melbourne Cup Day



On 6th November 2018 The Carrington Hotel held a Melbourne Cup fundraising event with all funds donated back to Cancer Wellness Support.

With generous donations received from the local business community \$8,700 was raised.

GOAL 4

Best practice Corporate Governance

Corporate Best Practice

- The organisation is legally compliant. Board members are appointed by members' vote for a two year period at the Annual General Meeting and contribute a range of experience and skills in business, health, welfare and management.
- Workplace Health and Safety awareness and training and First Aid training (where appropriate) is provided for staff and volunteers.
- The Volunteer Handbook is updated and distributed to each volunteer at orientation.
- New accounting systems have provided upgraded reporting for the organisation's financial management.
- Annual Financial Statements are externally audited and made available on the Cancer Wellness Support website www.cancersupport.org.au
- Appropriate insurances are upgraded to cover changing requirements.

Treasurer's Statement



Once again we have enjoyed increased turnover in our organisation, reflecting the growing community loyalty & support. Our management team, leading our committed volunteers in creating a great atmosphere in which to work, are to be commended in their tireless efforts. This year we have provided 5,724 subsidised complementary therapies through our large team of over 40 therapists, nurses & counsellors.

Unlike many other charities who importantly raise funds for research, the focus at Cancer Wellness Support is to provide services for those living with cancer and their families who are trying to navigate its challenges.

Our financial status is audited every year and those details are herewith contained in our Annual Report. The efforts of our General Manager and Client Services Manager in taking over from our founder are to be applauded. Bronwen Johnston and Vivienne Maitland have continued with the implementation of the vision of our founder Robyn Yates OAM.

To fellow Board members, management team, staff and most importantly our band of volunteers, I truly thank you for your past efforts and look forward to your continued support.

Bob Yates, Treasurer

Cancer Wellness Support Inc

ABN: 67 202 763 705

Independent Auditor's Report to the Members

Opinion

In my opinion, the financial report present of Cancer Wellness Support Inc has been prepared in accordance with Division 60 of the Australian Charities and Not-for-profits Commission Act 2012, including:

- (a) giving a true and fair view of the association's financial position as at 30 June 2019 and of its financial performance and cash flows for the year ended on that date; and
- (b) complying with Australian Accounting Standards to the extent described in Note 1 and Division 60 of the Australian Charities and Not-for-profits Commission Regulation 2012.

Basis of Accounting and Restriction on Distribution

Without modifying my opinion, I draw attention to Note 1 to the financial statements, which describes the basis of accounting. The financial report has been prepared to assist Cancer Wellness Support Inc to meet the requirements of the Australian Charities and Not-for-profits Commission Act 2012. As a result, the financial report may not be suitable for another purpose.

Signed on : 10 October 2019



Shelley Jane Rodwell

Chartered Accountant

Member Number: 78555



Cancer Wellness Support Inc.

ABN 67 202 763 705

Financial Statements

For the year ended 30 June 2019

Shelley June Rodwell
21 Main Street | PO Box 395
Lithgow 2790
ph: (02) 6352 3152 | fx: (02) 6351 3219

Cancer Wellness Support Inc
ABN 67 202 763 705
Income and Expenditure Statement
For the year ended 30 June 2019

	2019	2018
	\$	\$
Income		
Op Shop Income	1,486,233.24	1,495,089.62
Fundraising Income	35,526.15	12,162.36
Grants & Sponsorship	27,666.64	35,506.02
Client Services	22,187.05	5,323.65
Membership Fees	13,540.24	13,350.65
Donations	29,593.95	25,453.57
Support Groups	3,761.70	4,349.80
Bequests	84,648.55	
Work-for-the-Dole	30,910.61	
Interest received	3,649.13	7,449.71
Other income	2,970.32	
Profit on sale of property, plant, equip	(1,528.11)	
Total income	<u>1,739,159.47</u>	<u>1,598,685.38</u>
Expenses		
Advertising & promotion	5,543.76	8,407.33
Audit fees	1,000.00	1,000.00
Bank fees & charges	2,980.92	10,629.86
Borrowing expenses		6,242.80
Cleaning & rubbish removal	53,675.81	69,921.32
Client Services	19,240.55	25,768.40
Client Therapies	164,534.23	176,589.30
Computer Expenses	7,661.27	376.73
Consultants fees	675.00	350.00
Consumables		852.74
Depreciation - Buildings	35.00	
Depreciation - Other	13,792.95	11,940.00
Filing Fees, Licences & Reg Fees		599.64
Flowers & Gifts	4,827.44	2,879.05
Fundraising Expenses	16,258.77	11,286.54
Gardening & Grounds Maintenance	5,859.35	3,158.55
Insurance	11,229.65	5,175.65
Interest - Australia	46,721.88	49,481.38

The accompanying notes form part of these financial statements.

Cancer Wellness Support Inc
ABN 67 202 763 705
Income and Expenditure Statement
For the year ended 30 June 2019

	2019	2018
	\$	\$
Legal fees	1,015.45	
Meeting Expenses	2,868.51	3,567.99
Membership Cards Stickers Pins	276.11	305.99
Motor Vehicle Expenses	69,250.91	43,893.39
Op Shop Expenses		
Katoomba	107,259.51	103,124.71
Penrith	119,299.17	124,806.39
Office Administration		
Leura	31,214.20	51,427.69
Warwick	50,941.60	51,066.06
Postage	2,142.06	2,255.15
Printing & stationery	1,654.54	
Rates & land taxes	6,747.52	5,023.58
Repairs & maintenance	16,017.02	458.18
Staff training	1,123.28	976.14
Subscriptions & Memberships	1,933.26	1,901.78
Travel Expenses	775.19	5,538.92
Volunteer Expenses	8,997.48	9,536.54
Wages & Employment Expenses	673,143.45	567,603.40
Total expenses	<u>1,448,695.84</u>	<u>1,356,145.20</u>
Net profit attributable to the association	<u>290,463.63</u>	<u>242,540.18</u>
Total changes in equity of the association	<u>290,463.63</u>	<u>242,540.18</u>
Opening retained profits	1,385,150.28	1,142,610.10
Net profit attributable to the association	<u>290,463.63</u>	<u>242,540.18</u>
Closing retained profits	<u>1,675,613.91</u>	<u>1,385,150.28</u>

The accompanying notes form part of these financial statements.

Cancer Wellness Support Inc
ABN 67 202 763 705
Detailed Balance Sheet as at 30 June 2019

	Note	2019	2018
		\$	\$
Current Assets			
Cash Assets			
Cash At Bank - Bendigo Bank		75,727.60	74,299.22
Cash At Bank - Donation A/c		1,973.75	10,222.57
Cash At Bank - Bendigo Bank C/card		1,943.41	566.77
Cash At Bank - Building Fund A/c			169,836.28
Cash Floats		525.00	525.00
		80,169.76	255,449.84
Receivables			
Trade debtors		20,561.34	20,870.03
		20,561.34	20,870.03
Current Tax Assets			
GST payable control account		(344.80)	(98.84)
Input tax credit control account		12,415.47	15,144.34
		12,070.67	15,045.50
Other			
Prepayments			15,978.32
Rental Bond - Penrith		7,975.00	7,975.00
		7,975.00	23,953.32
Total Current Assets		120,776.77	315,318.69

The accompanying notes form part of these financial statements.

Cancer Wellness Support Inc
ABN 67 202 763 705
Detailed Balance Sheet as at 30 June 2019

	Note	2019 \$	2018 \$
Non-Current Assets			
Property, Plant and Equipment			
Freehold Land & Building - Mondeval		2,353,293.33	2,353,293.33
Building Improvements - Admin		12,877.17	
Less: Accumulated depreciation		(8,486.00)	
Leasehold improvements		34,295.00	35,593.95
Less: Accumulated depreciation		(1,819.05)	(2,181.00)
Plant & Equipment - Admin Office		9,905.34	14,593.48
Less: Accumulated depreciation		(3,524.86)	(2,805.00)
Plant & Equipment - Katoomba		938.00	
Less: Accumulated amortisation		(793.00)	
Plant & Equipment - Penrith		4,702.11	
Less: Accumulated depreciation		(1,909.00)	
Client Services Equipment - At Cost		9,357.52	
Less: Accumulated depreciation		(5,875.00)	
Motor vehicles - At cost		87,272.45	67,092.56
Less: Accumulated depreciation		(52,483.00)	(19,635.00)
		<u>2,437,751.01</u>	<u>2,445,952.32</u>
Total Non-Current Assets		<u>2,437,751.01</u>	<u>2,445,952.32</u>
Total Assets		<u>2,558,527.78</u>	<u>2,761,271.01</u>

The accompanying notes form part of these financial statements.

Cancer Wellness Support Inc
ABN 67 202 763 705
Detailed Balance Sheet as at 30 June 2019

	Note	2019 \$	2018 \$
Current Liabilities			
Payables			
Unsecured:			
Trade creditors		41,936.62	50,121.20
Other Creditors		11,458.48	12,124.17
		<u>53,395.10</u>	<u>62,245.37</u>
Current Tax Liabilities			
Amounts withheld from salary & wages		16,798.95	16,969.00
Superannuation Payable		4,785.97	14,283.24
		<u>21,584.92</u>	<u>31,252.24</u>
Other			
Memberships In Advance		900.00	2,262.35
		<u>900.00</u>	<u>2,262.35</u>
Total Current Liabilities		<u>75,880.02</u>	<u>95,759.96</u>
Non-Current Liabilities			
Financial Liabilities			
Secured:			
Bank Loans - Bendigo Bank		767,949.34	1,238,540.31
		<u>767,949.34</u>	<u>1,238,540.31</u>
Provisions			
Employees entitlements		39,084.51	41,820.46
		<u>39,084.51</u>	<u>41,820.46</u>
Total Non-Current Liabilities		<u>807,033.85</u>	<u>1,280,360.77</u>
Total Liabilities		<u>882,913.87</u>	<u>1,376,120.73</u>
Net Assets		<u>1,675,613.91</u>	<u>1,385,150.28</u>

The accompanying notes form part of these financial statements.

Cancer Wellness Support Inc
ABN 67 202 763 705
Detailed Balance Sheet as at 30 June 2019

	Note	2019	2018
		\$	\$
<hr/>			
Members' Funds			
Accumulated surplus (deficit)		1,675,613.91	1,385,150.28
Total Members' Funds		<u>1,675,613.91</u>	<u>1,385,150.28</u>

The accompanying notes form part of these financial statements.

“Cancer Wellness Support has been an incredible support for me this year. After my diagnosis I felt anxious and confused but found no psychological support in the medical system. The staff at Cancer Wellness Support were instantly welcoming and caring, with a highly skilled team of therapists and genuinely caring support staff. The therapies on offer are wonderful and I have found them truly useful, supporting holistic health like no other place I have experienced.”

Lisa Forrest (client)

Bequests


A lasting gift for the assistance of people living with cancer can be made by remembering Cancer Wellness Support in your will.

Consider adding to your will a clause such as:

'I give to Cancer Wellness Support (ABN 67 202 763 705) the sum of.....free of all duties and testamentary expenses for its general purpose, and I direct the receipt of the Chairman shall be sufficient discharge to my executors for this bequest'.

Acknowledgements

Dick Harris
Greg Palmer
Trish Doyle MP
Philip Hammon
Bennett's Printing
Rotary, Katoomba
Mitre 10, Katoomba
Inner Wheel Penrith
Western Weekender
Bunnings, Katoomba
Caring Hearts Quilters
Fantastic Aussie Tours
Susan Templeman MP
Springwood Red Cross
Blue Mountains Gazette
Bendigo Bank, Katoomba
Blue Mountains Roof Care
Hominy Bakery, Katoomba
Ravir Boutique, Blackheath
Blue Mountains Food Co op
Michael Small - Photography
Blackheath Family Shoe Store
The Carrington Hotel, Katoomba
Leura Gardens Festival Committee
Penrith Valley Chamber of Commerce
Maurice Cooper, OAM & Kerry McKenzie
Complete Recruitment Solutions, Penrith
Glenbrook Panthers Women's Bowling Club
Nepean/Blue Mountains Prostate Cancer Support Group
Blue Mountains Regional Business Chamber of Commerce



Blue Mountains and Penrith Valley Cancer Wellness Support, thank these and our many other donors and fund raisers and also the contributors and shoppers at our Op Shops.

Centre Locations

Blue Mountains Cancer Wellness Support Centre

104 - 105 Railway Parade, Leura NSW 2780

PO Box 18, Katoomba NSW 2780

ph: (02) 4784 2297

email: headoffice@cancersupport.org.au

web: www.cancersupport.org.au

ABN: 67 202 763 705

Penrith Valley Cancer Wellness Support Centre

56 Warwick Street, Penrith NSW 2750

ph: (02) 4721 1317

email: penrith@cancersupport.org.au

Op Shop Locations

Katoomba

Units 1-3/27 Whitton Street, Katoomba NSW 2780

ph: (02) 4782 6076

email: katoombaopshop@cancersupport.org.au

Penrith

201 - 211 High Street, Penrith NSW 2750

ph: (02) 4721 5823

email: penrithopshop@cancersupport.org.au



Complementary Therapies | Community Generosity